

# Installation Guide

## Install the driver

### Step 1.

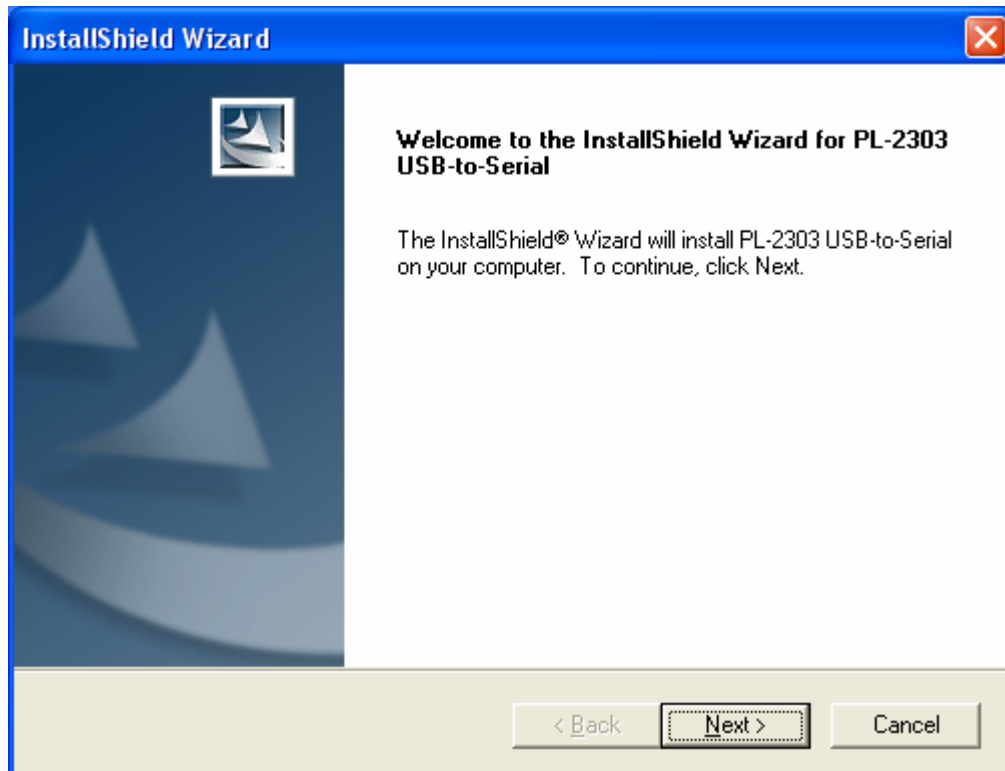
- Please insert the driver disk into your computer.
- It will automatically run the driver file "**Setup.exe**", or you can find the file from driver disk such like (D:\Drvier\), then double-clicks to install.



Setup  
Prolific Technology Inc

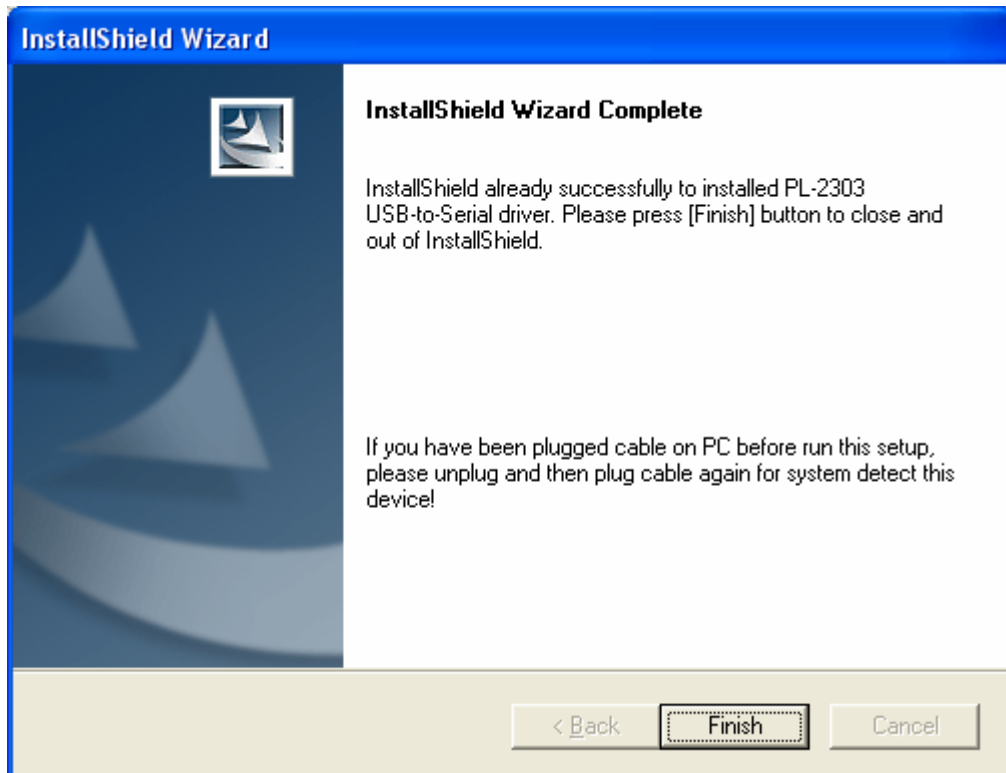
### Step 2.

- Click "**Next**" to continue.



### Step 3.

- Click “**Finish**” to complete the installation.



## Plug the USB cable

### Step 1.

- Plug the USB B type connector of USB cable into the USB BAY-4.



### Step 2.

- Plug the USB A type connector of USB cable into the USB host controller.

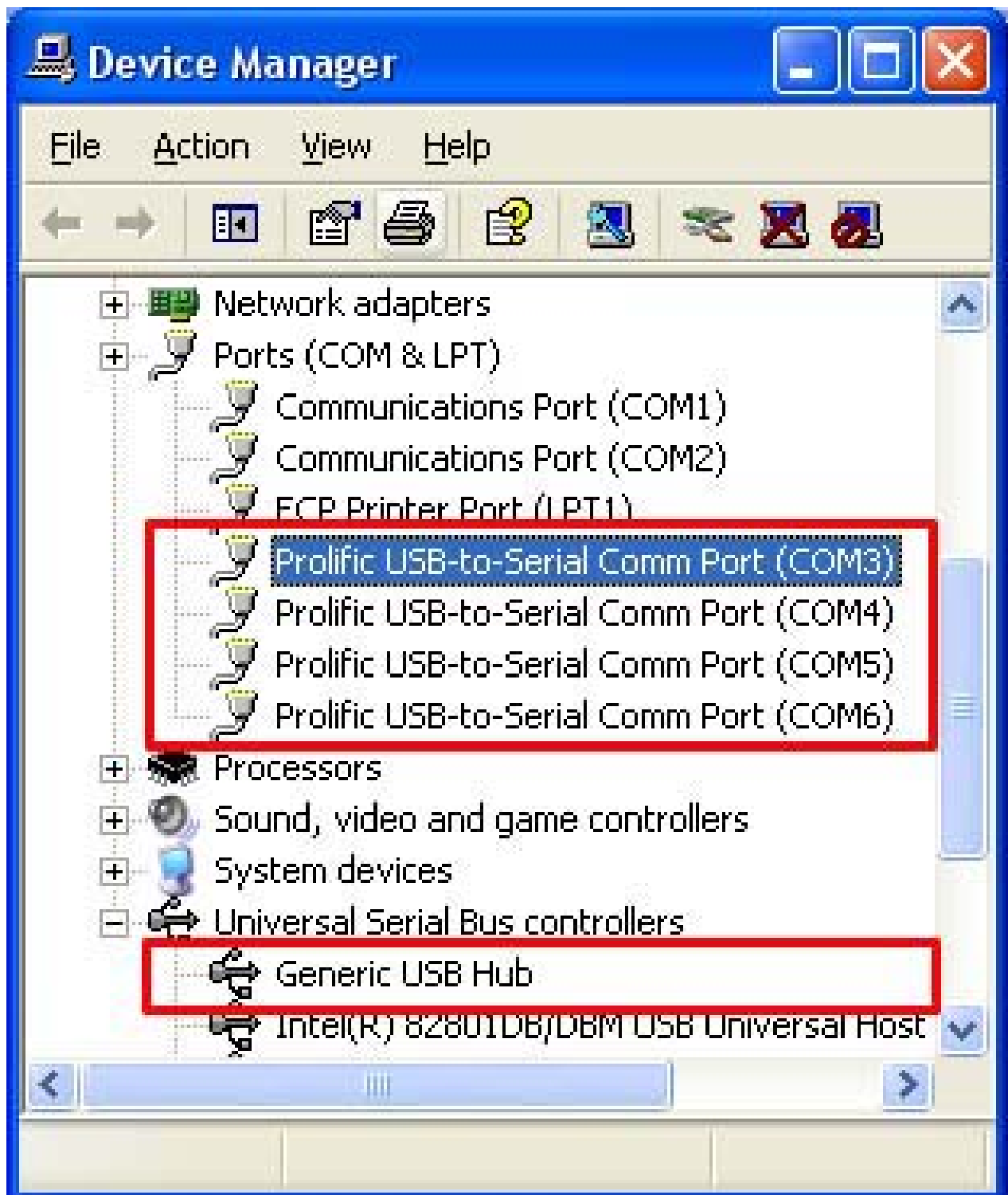


## Verify the device installed

A) Go to the “**Device Manager**” and click “**Ports [COM & LPT]**”, It will show 4 descriptions as below :

- Prolific USB-to-Serial Comm Port (COM 3)
- Prolific USB-to-Serial Comm Port (COM 4)
- Prolific USB-to-Serial Comm Port (COM 5)
- Prolific USB-to-Serial Comm Port (COM 6)

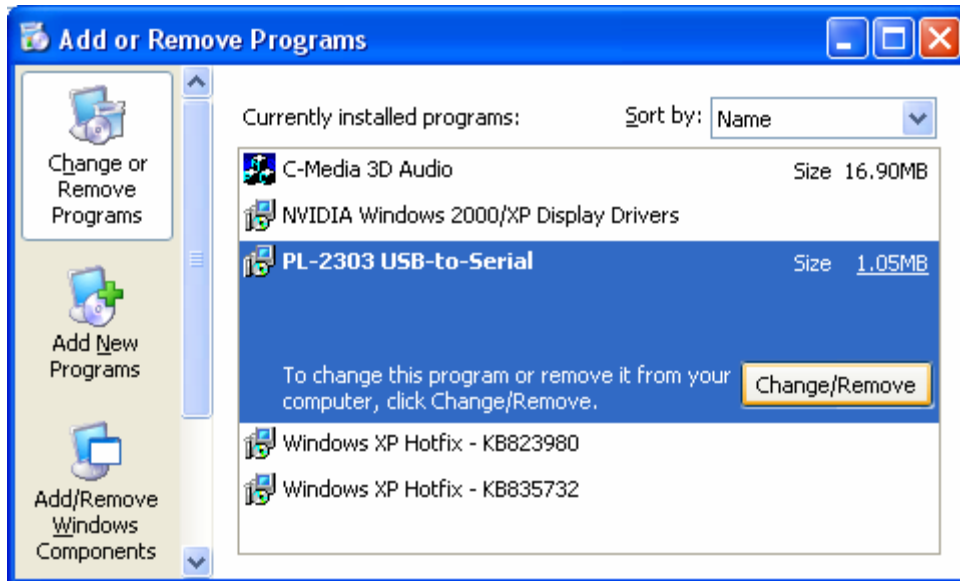
B) Click “**Universal Serial Bus controllers**”. It will show the “**Generic USB Hub**”.



# Un-installation

## Step 1.

- Go to the Control Panel and click the **“Add/Remove”** programs, then select the **“PL-2303 USB to Serial”** item to uninstall.



## Step 2.

- Select **“Yes, I want to restart my computer now.”**, and click **“Finish”** to complete.
- The PC will reboot automatically.

