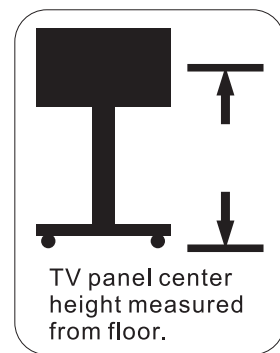
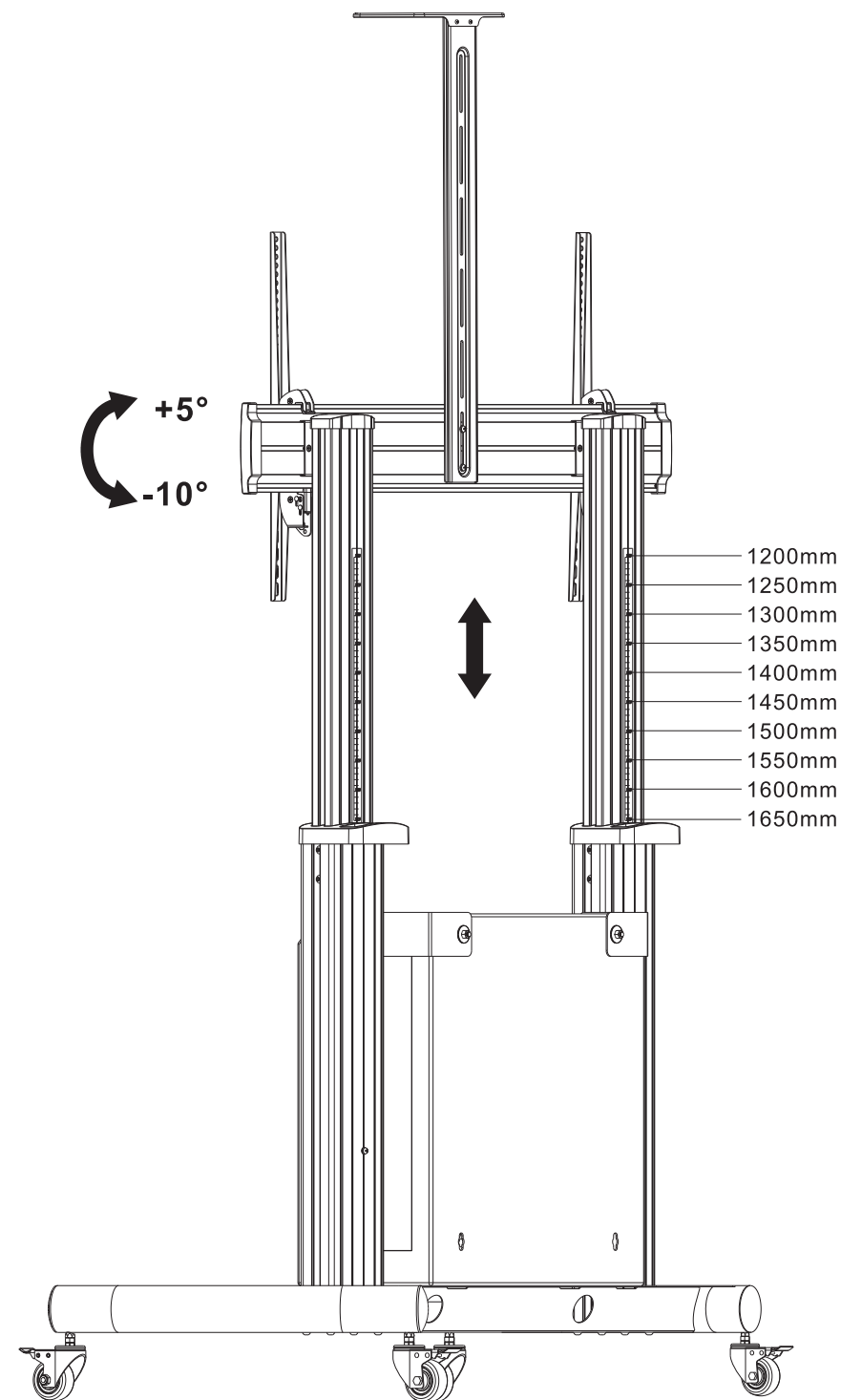
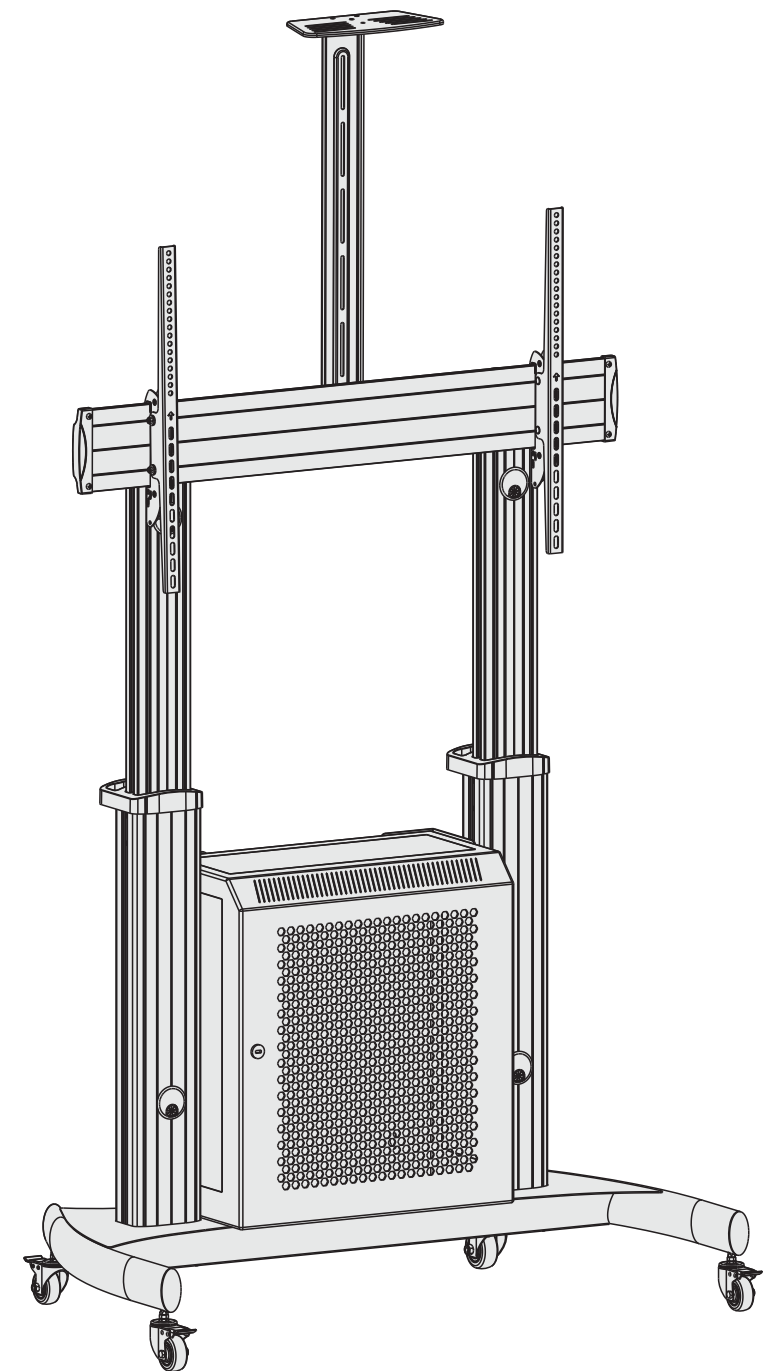


9. Adjustment



# TV Cart



### Maintenance

- Check if the bracket is secure and safe to use at regular intervals(at least every three months).
- Please contact your distributor if you have any questions.

### INSTALLATION MANUAL

ICA-TR 29




400x400/600x400  
800x400/800x600  
900x600/1000x600



100kg/220lbs



5kg/11lbs

 **Read the entire instruction manual before you start installation and assembly. If you have any questions regarding any of the instructions or warnings, please contact your local distributor for assistance.**

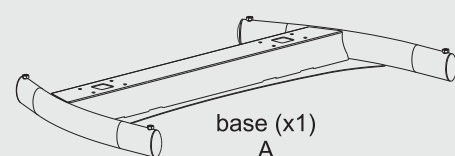
## CAUTION

- Use with products heavier than the rated weights indicated may result in instability causing possible injury.
- Please closely follow the assembly instructions. Improper installation may result in damage or serious personal injury.
- Safety gear and proper tools must be used. This product should only be installed by professionals.
- Make sure that the supporting surface will safely support the combined weight of the equipment and all attached hardware and components.
- Use the mounting screws provided and DO NOT OVER TIGHTEN mounting screws.
- This product contains small items that could be a choking hazard if swallowed. Keep these items away from children.
- This product is intended for indoor use only. Using this product outdoors could lead to product failure and personal injury.

### Requirement for Installation



### Component Checklist



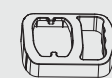
base (x1)  
A



wheel caster (x4)  
B



universal plate (x1)  
C



plastic handle (x2)  
D



column (x2)  
E



fixing plate (x2)  
F



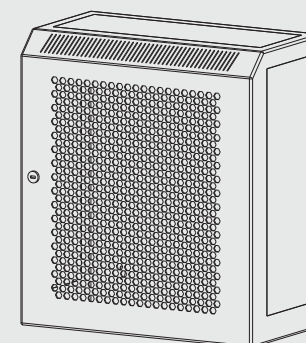
left adapter bracket (x1)  
G



right adapter bracket (x1)  
H



top cover (x2)  
I



cabinet (x1)  
J



connecting plate (x1)  
K



camera shelf (x1)  
L



M8x20 (x2)  
M



φ 30x φ 8.2 (x4)  
N



M6x25 (x2)  
O



M4x6 (x3)  
P



M4x6 (x2)  
Q



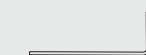
M8 (x2)  
R



M6x14 (x4)  
S



M8x25 (x8)  
T



Allen key (x1)  
U



wrench (x1)  
V

**IMPORTANT:** Ensure that you have received all parts according to the component checklist prior to installation. If any parts are missing or faulty, contact your place of purchase for a replacement.

### Package M



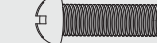
M5x14 (x4)  
M-A



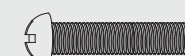
M6x14 (x4)  
M-B



M6x30 (x4)  
M-C



M8x30 (x4)  
M-D



M8x50 (x4)  
M-E



washer (x4)  
M-F

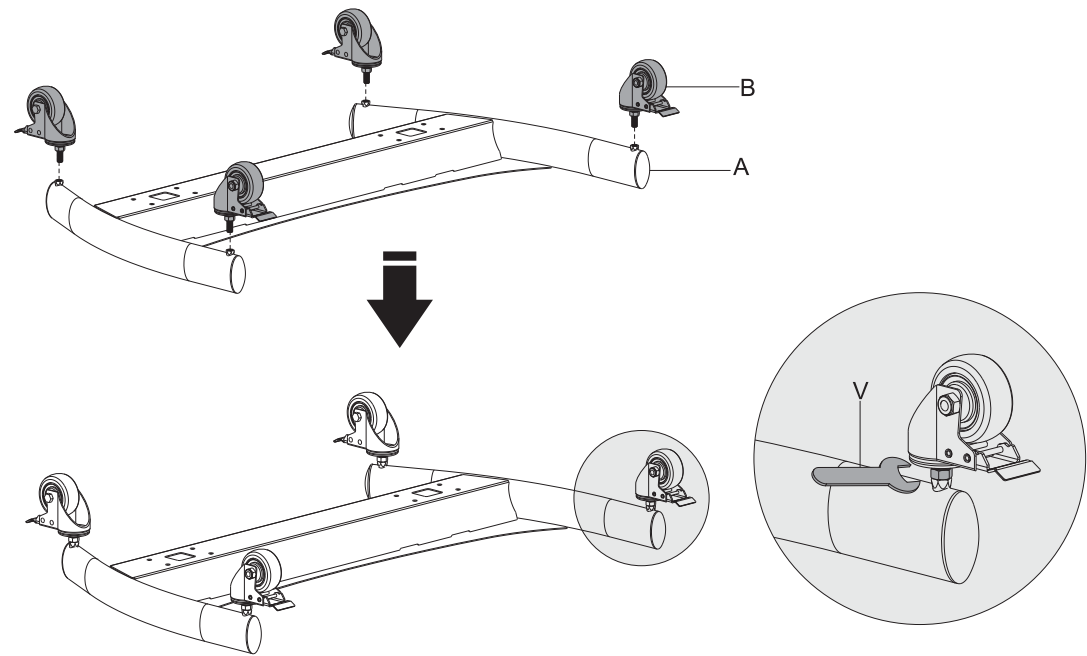


small spacer (x8)  
M-G



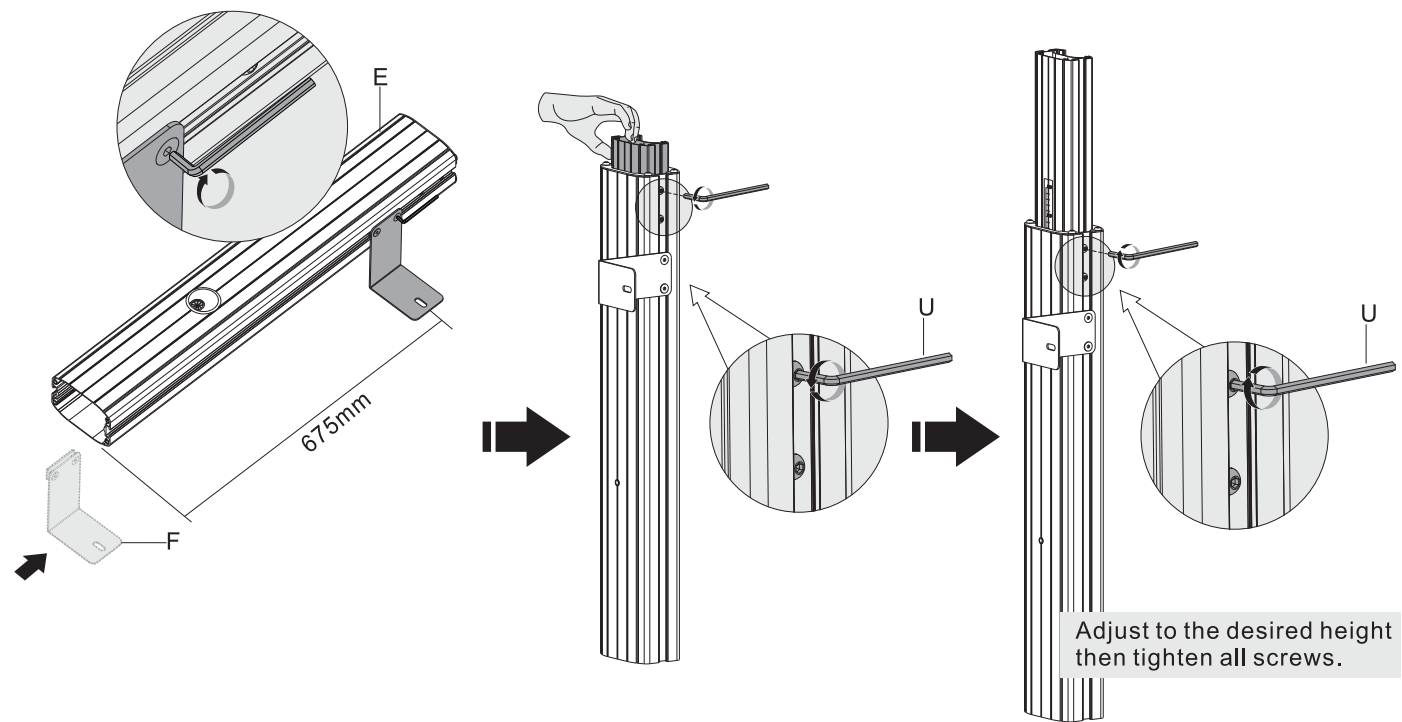
big spacer (x8)  
M-H

## 1. Installing the Wheel Caster

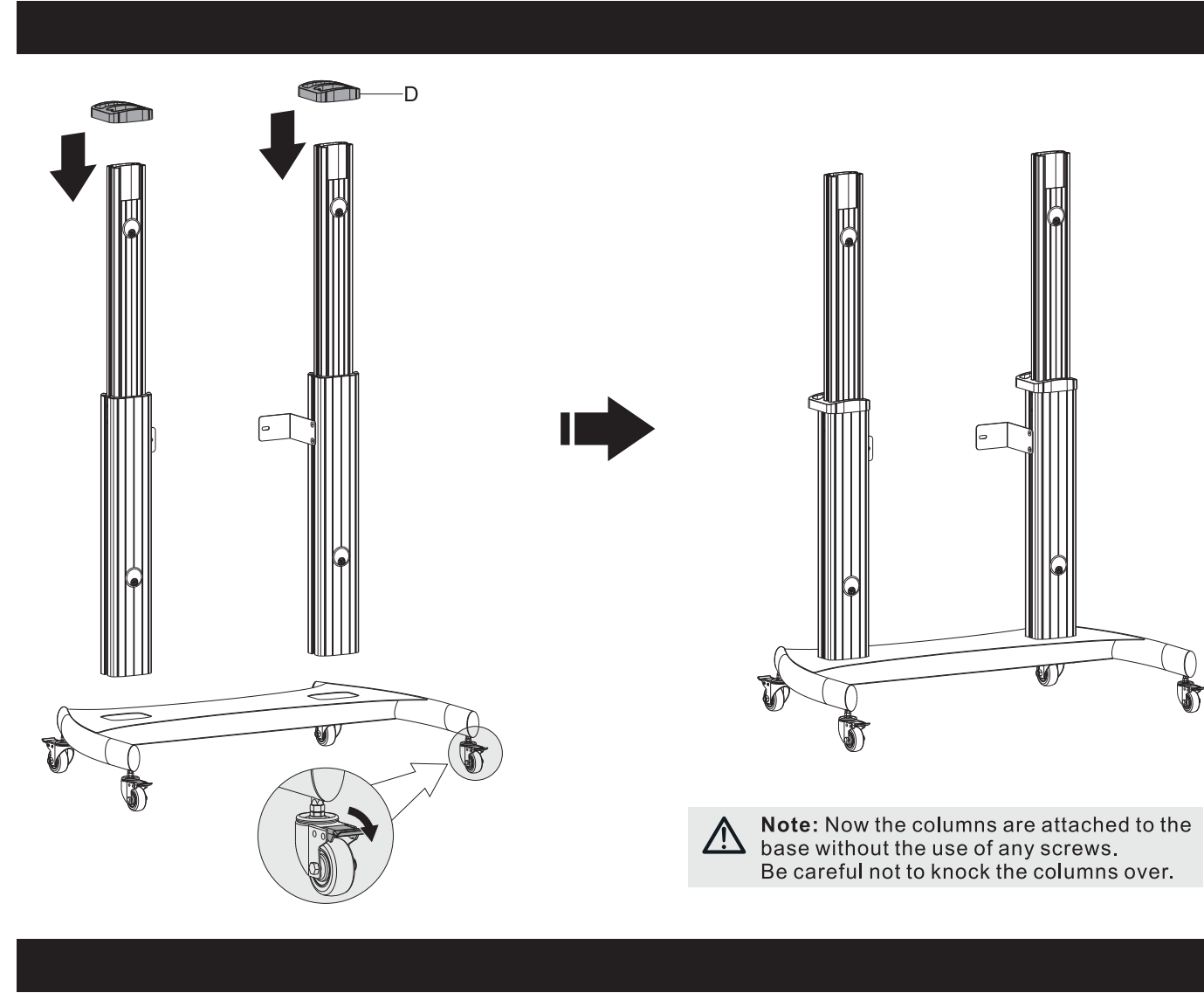


Note: Each caster can be adjusted independently for fine tuning. Slightly turn the nut to lower or raise the base.

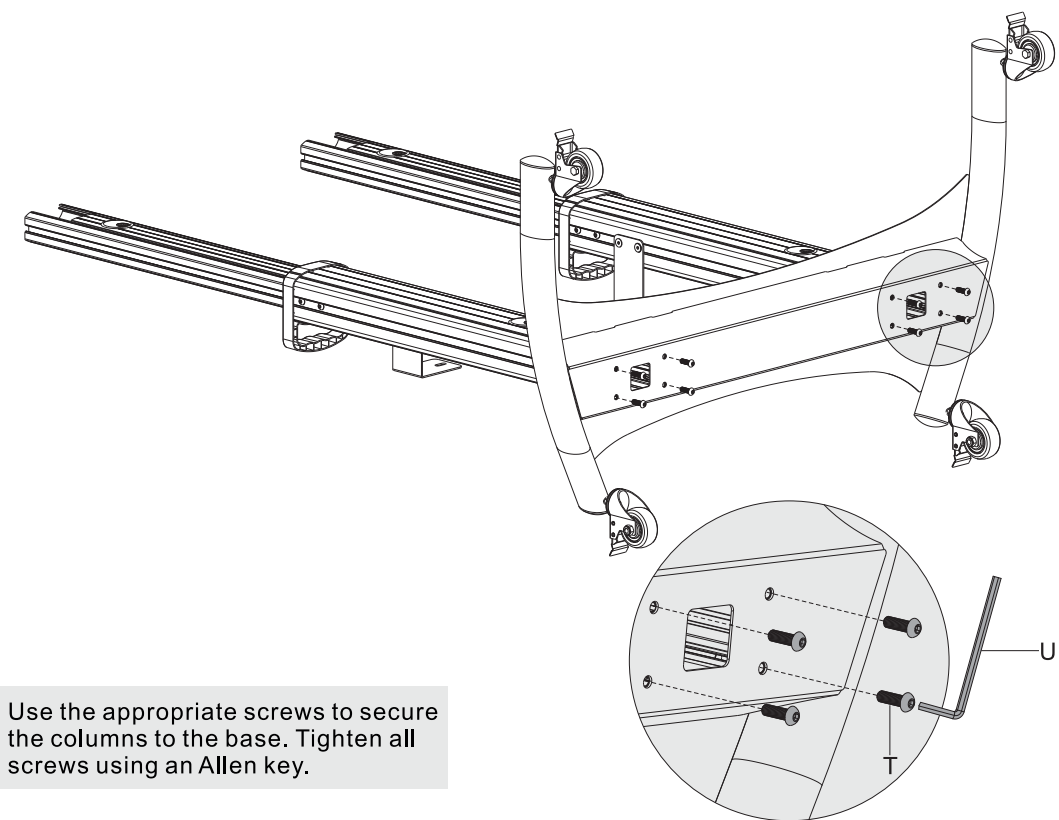
## 2. Attaching the Columns to the Base



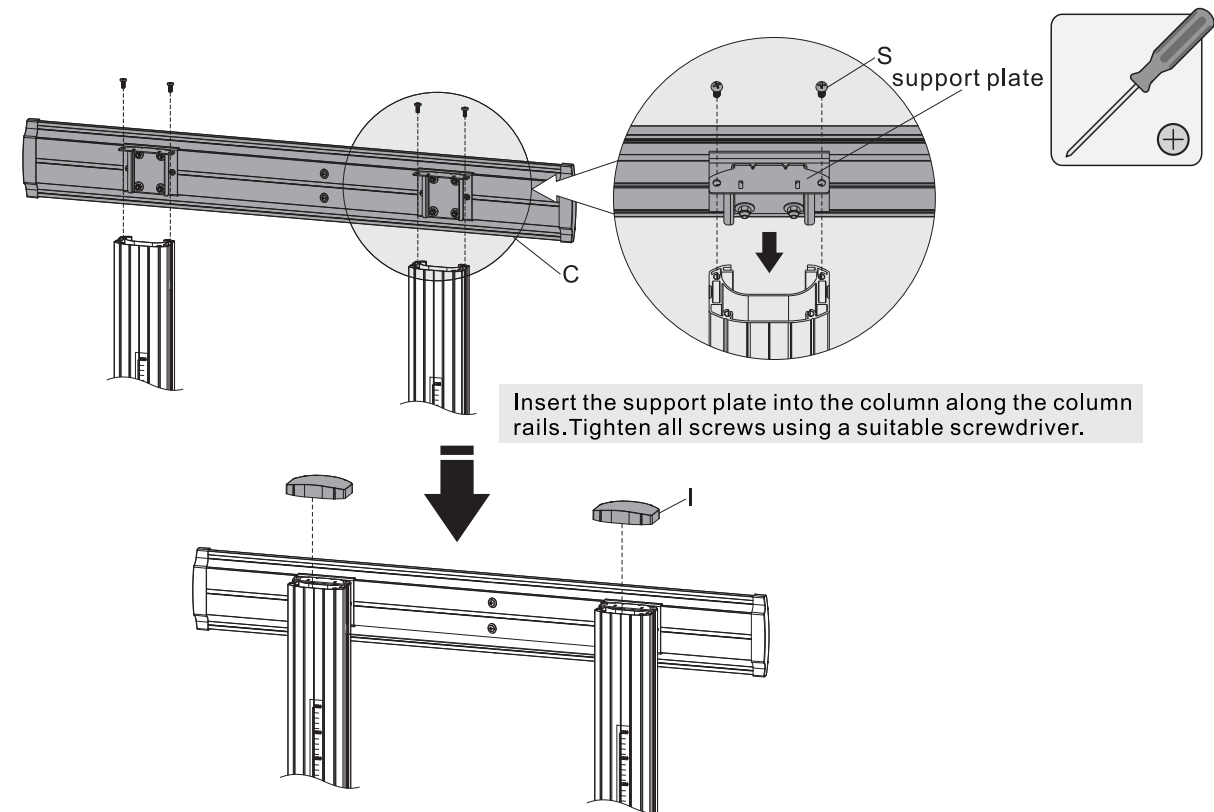
Repeat this step for the left column.  
**Note:** Make sure both columns are at the same height using the height indicator as guide.



**Note:** Now the columns are attached to the base without the use of any screws. Be careful not to knock the columns over.

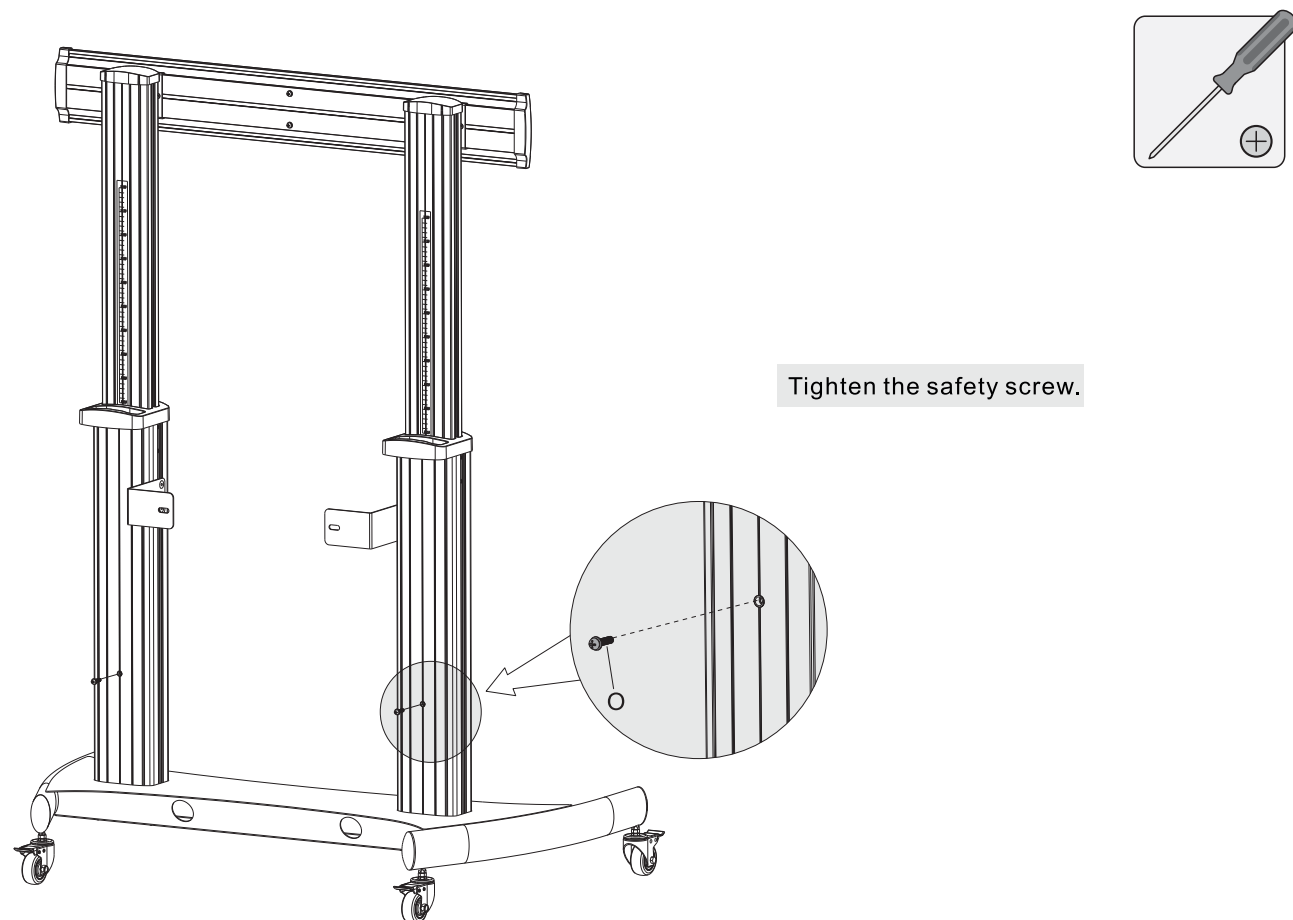


Use the appropriate screws to secure the columns to the base. Tighten all screws using an Allen key.



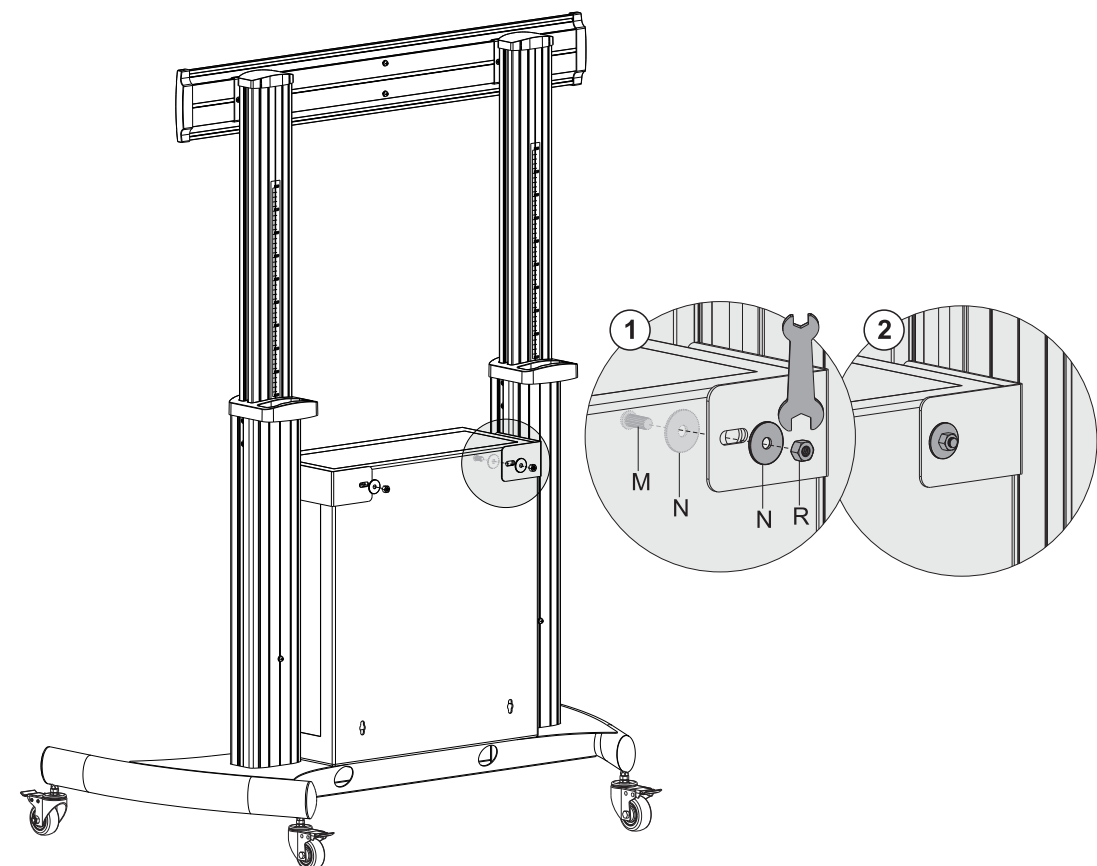
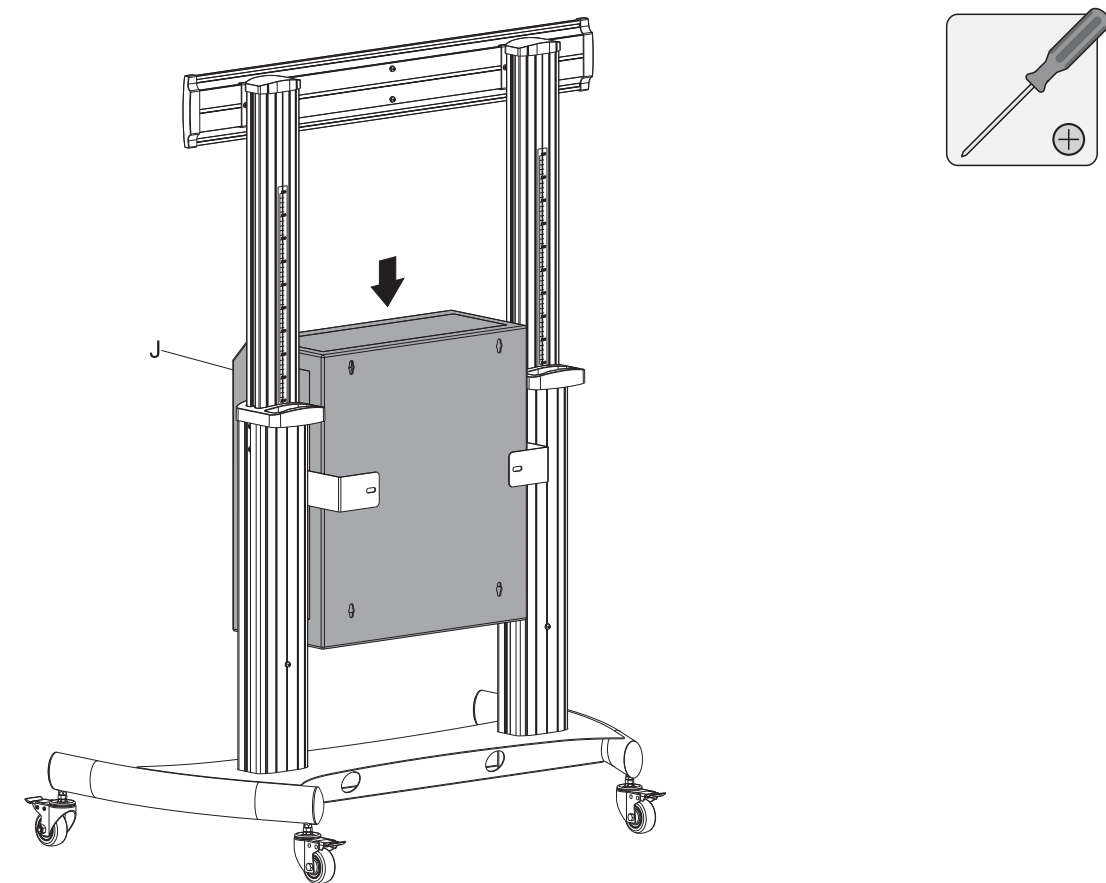
Insert the support plate into the column along the column rails. Tighten all screws using a suitable screwdriver.

Attach the universal plate to the columns with the appropriate screws. Tighten all screws using a Phillips screwdriver.

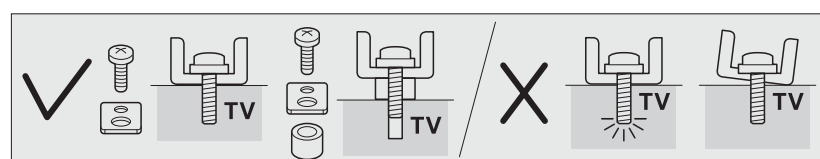


Tighten the safety screw.

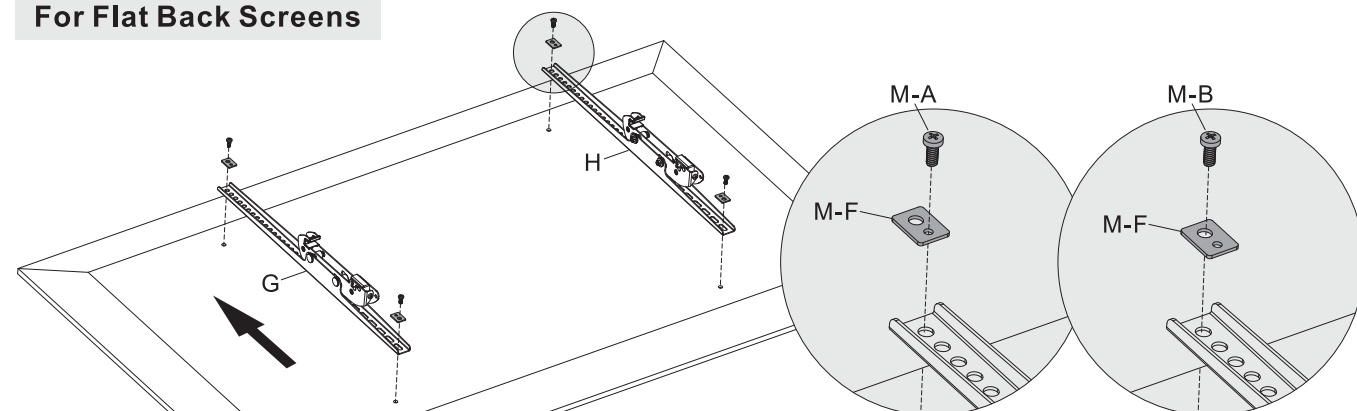
3. Installing the Cabinet



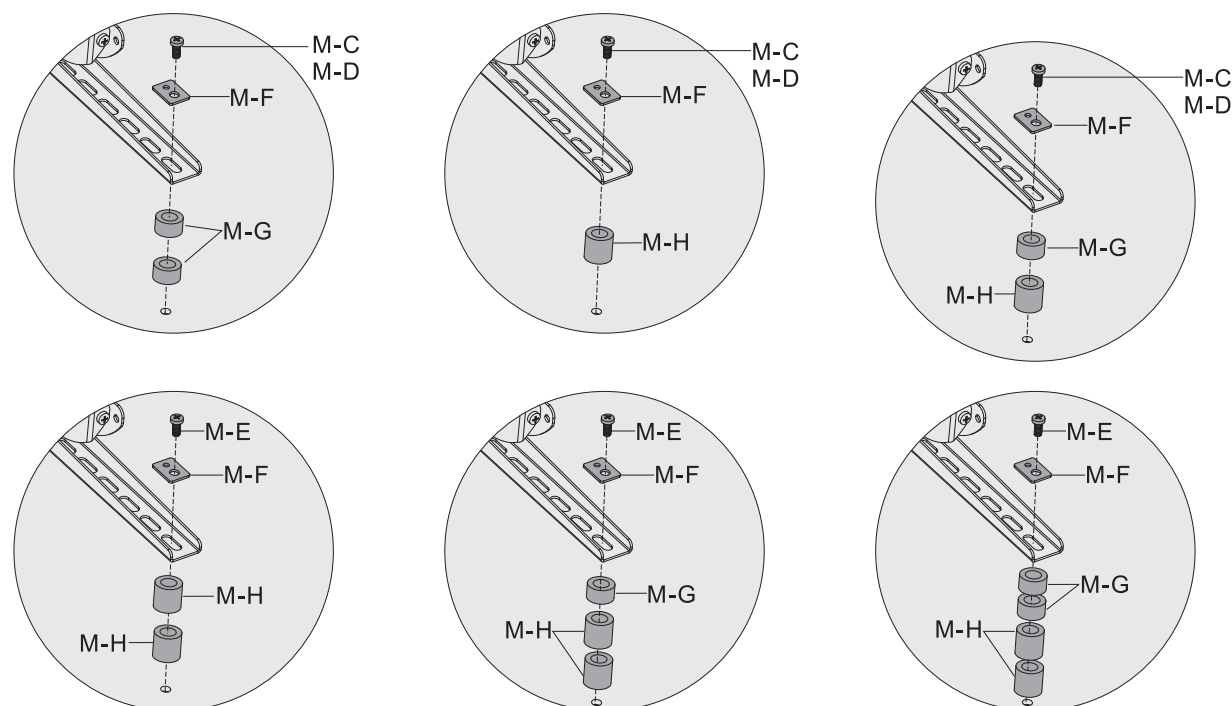
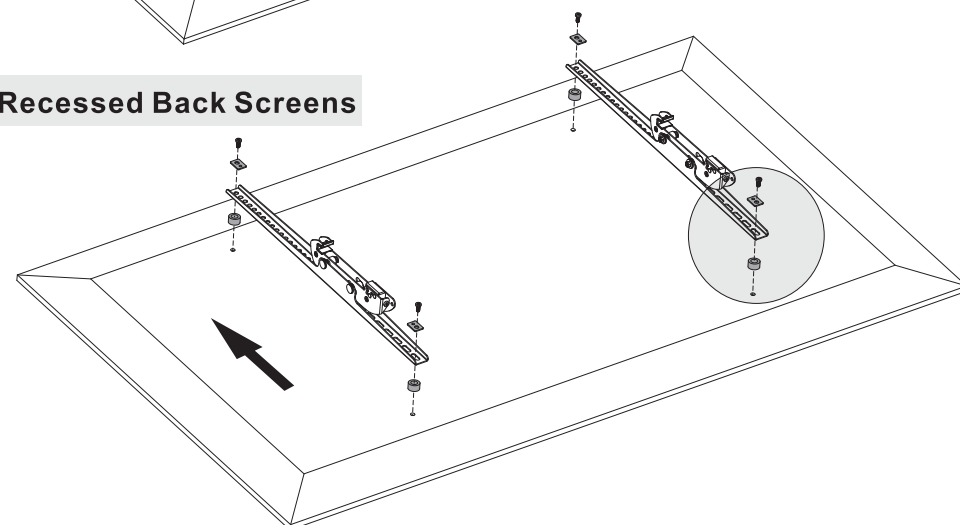
#### 4. Attaching the Adapter Brackets to TV



##### For Flat Back Screens



##### For Recessed Back Screens



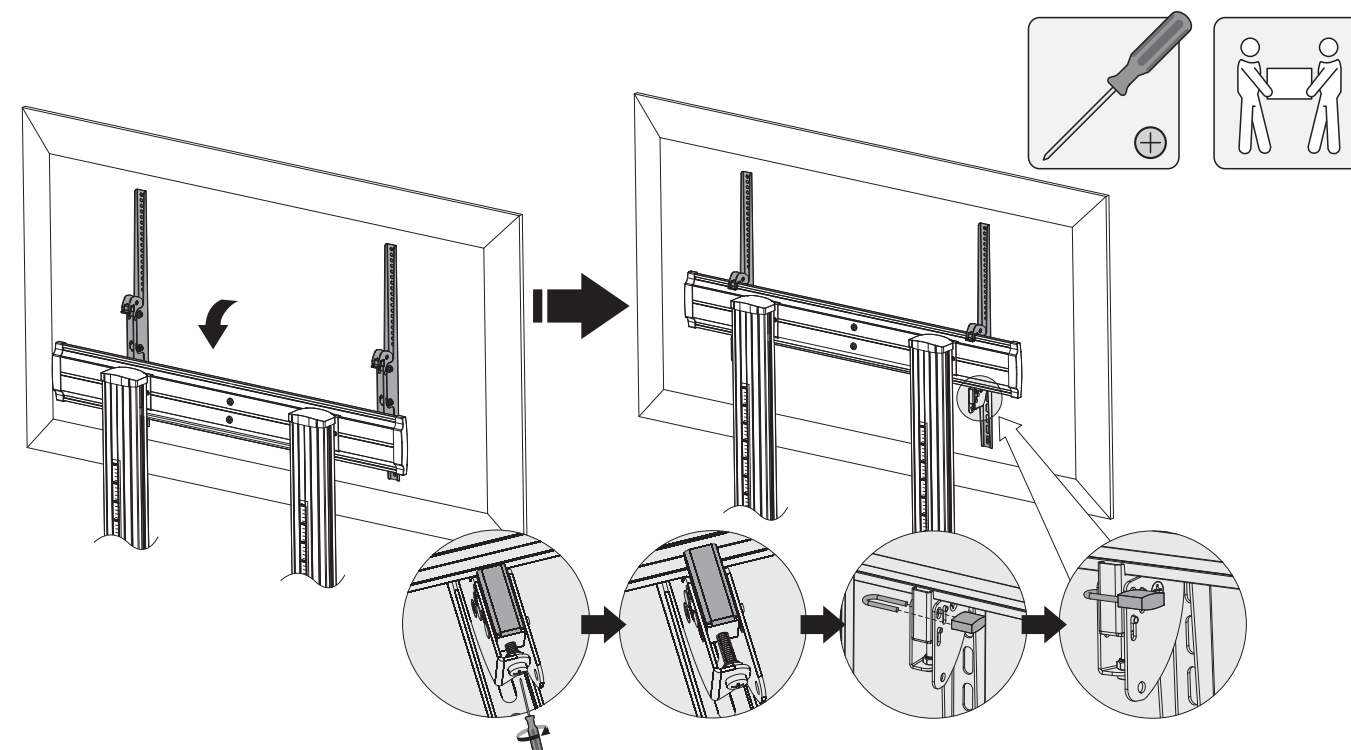
<b>M-A</b> 		<b>M-B</b> 	
<b>M-C</b> 		<b>M-D</b> 	
<b>M-E</b> 		<b>M-F</b> 	
<b>M-G</b> 		<b>M-H</b> 	

**Note:** Choose the appropriate screws, washers and spacers (if necessary) according to the type of screen.

- Position the adapter brackets as close as possible to the center of the display.
- Screw the adapter brackets onto the display.

**⚠ Tighten all screws but do not over tighten.**

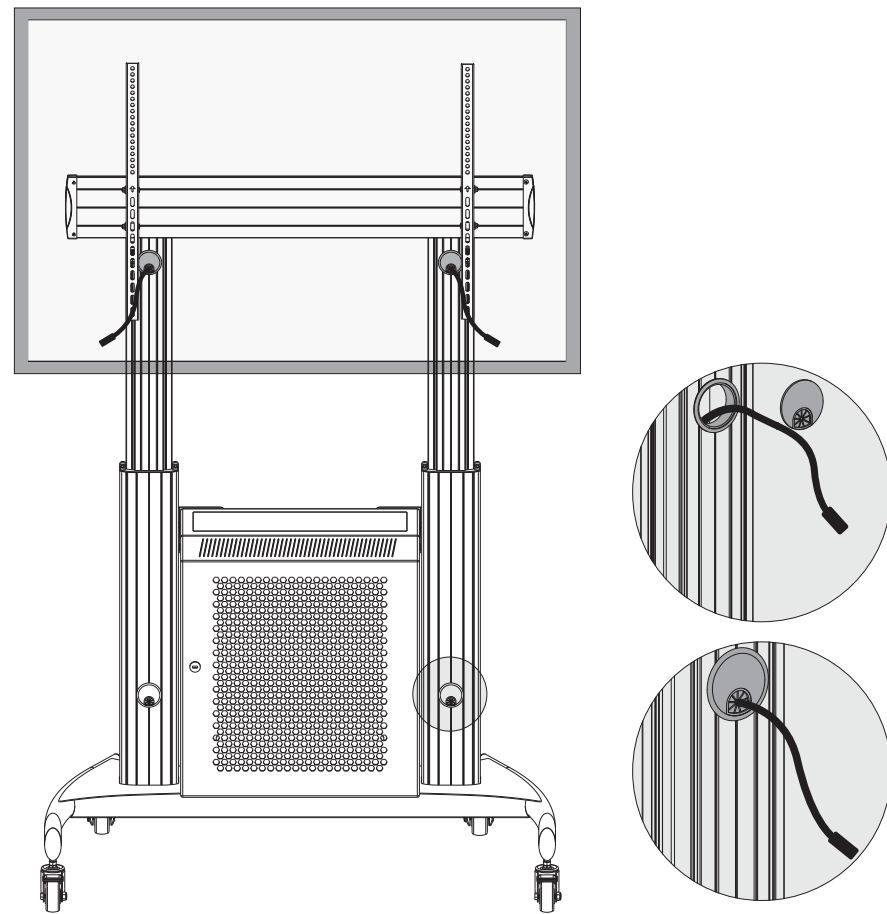
#### 5. Hanging the Display onto the Universal Plate



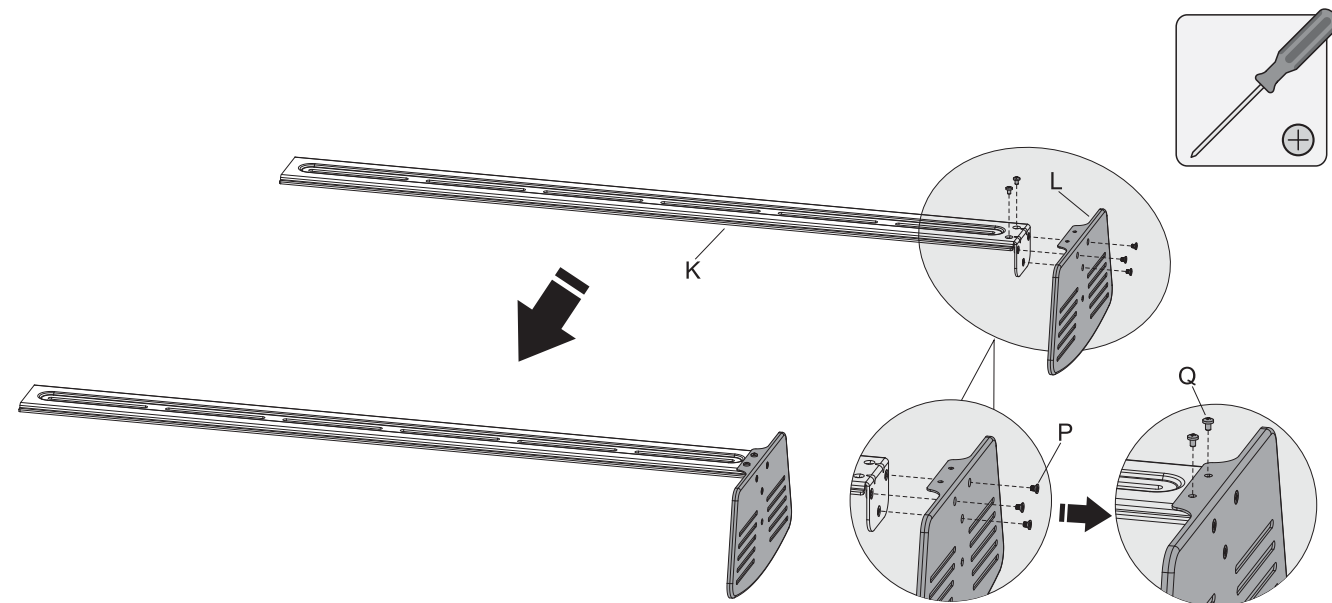
Hook the adapter brackets (attached the display) onto the universal plate.  
 Rotate the bottom screws counterclockwise to lock.  
 Rotate the bottom screws clockwise to unlock.  
 Use the padlock to prevent display from being stolen. (Padlock is not included.)  
**IMPORTANT:** Make sure the display is correctly mounted before releasing the display.



## 6. Cable Management

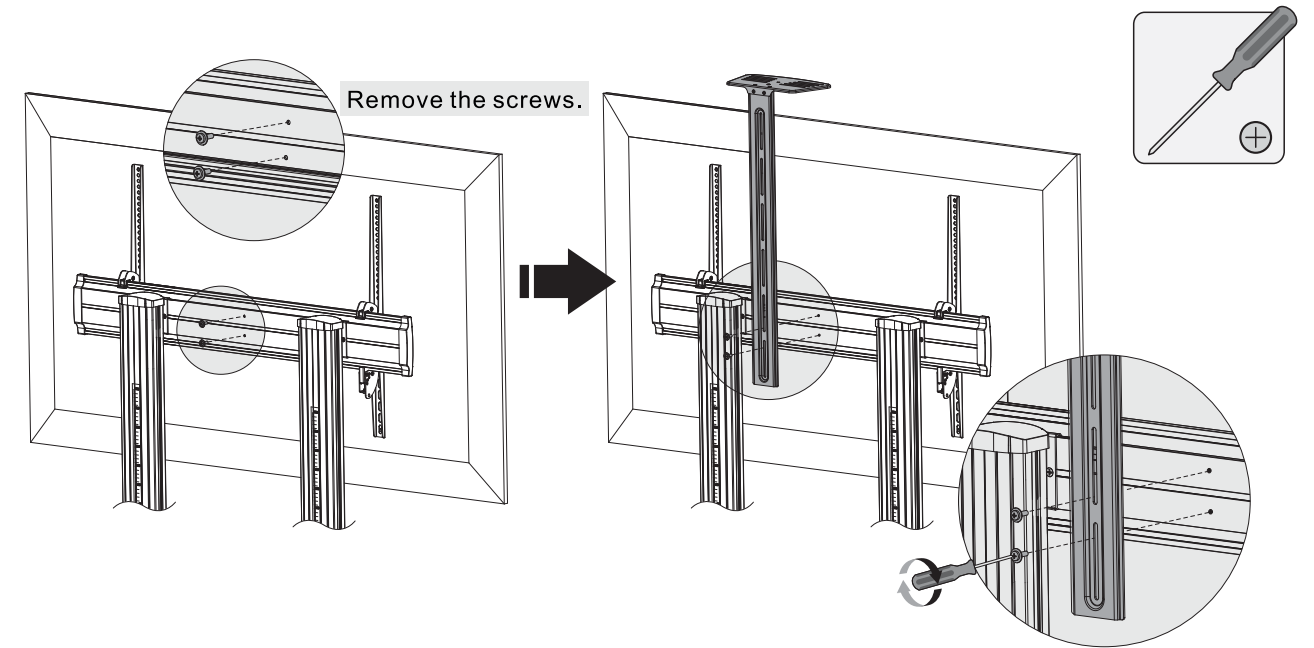


## 7. Installing the Camera Shelf



Attach the camera shelf to the connecting plate with the appropriate screws. Tighten all screws using a proper Phillips screwdriver.

## 8. Installing the Connecting Plate



Attach the connecting plate to the universal plate with the removed screws. Tighten all screws using a proper Phillips screwdriver.

