

19" Rack Cabinet

Safety rack 12HE

Under-desk installation



Safety rack cabinet for lan network and server installation

Floor standing cabinet suitable for LAN network installation and server installation which allows, thanks to the solid and robust structure and the key locks, to guarantee the maximum security of the devices installed inside.

The simple design with red profiles and the contained dimensions in height allow inserting the rack in any space, even under the desk in office, storing or in any other space, to allow the user to always have available all network devices.



Practicality: completely inspectional thanks to removable doors and panels. Leveling feet and wheels included in the supply guarantee stability and freedom of movement at the same time.



Safety: solid and robust metal structure equipped with key locks on doors and panels to prevent unwanted accesses.



Versatility: reversible and removable front and rear doors; removable side blind panels; adjustable front and rear rails; rear door and roof ready for fan installation of fans; pre-cut profiles for cables entry on roof and base. Feet and wheels included in the supply. Available 800 and 1000 mm depth.

italiana QUALITÀ

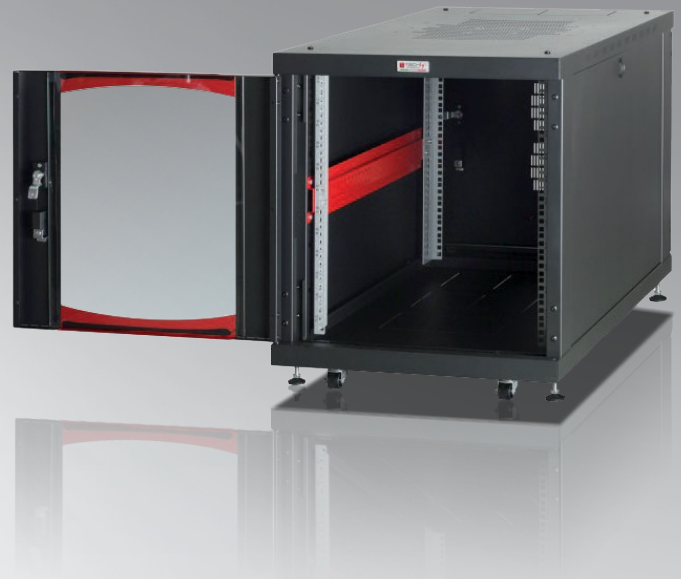
MADE IN ITALY CE certified according to EN 62208.
Built in compliance with European standards IEC297;
IEC297-1; IEC297-2; IEC297-3; EN61439-1; 60529;
EN12150-1 and UNI EN ISO 9001:2015 standard



WWW.TECHLY.COM

Features:

- 19" Server Rack, 12 HE, black for under-desk installation
- Removable panels and doors to facilitate installation of the equipment
- Reversible glass front door with hinges with quick release and handle with key lock
- Reversible metal rear door with handle and key lock; ready for two fans installation
- Blind side panels, removable with key locks
- Roof ready for ventilation system installation and provided with pre-cut profiles for cable entry
- Bottom prepared for cable entry through pre-cut profiles
- Complete with pair of adjustable 19" front and rear and adjustable rear
- Complete with leveling feet and wheels
- Static capacity: 360 kg, dynamic capacity: 225 kg
- IP20 protection degree according to EN 60529 standard
- Color: RAL9005 (black)



Code	W mm	D mm	H mm	HE	Color
I-CASE SVR-I128BK	600	800	670	12	RAL 9005 (black)
I-CASE SVR-I1210BK	600	1000	670	12	RAL 9005 (black)

