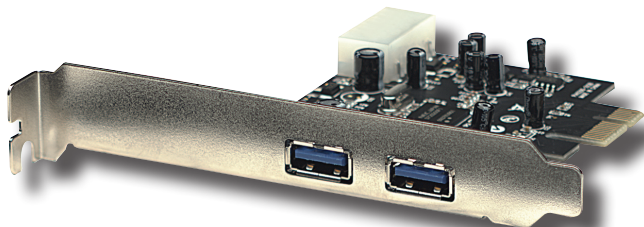


SUPERSPEED USB PCI EXPRESS CARD USER MANUAL

MODEL 150491




MANHATTAN™

MAN-150491-UM-0110-01

Thank you for purchasing the MANHATTAN® SuperSpeed USB PCI Express Card, Model 150491.

Connect data storage, digital media and other USB peripheral devices to your PCI Express-enabled computer by adding a pair of hot-swappable, internal ports — each supporting data transfer rates of up to 5 Gbps.

Installation of the card is quick and simple, so you'll soon be enjoying the benefits of these additional features:

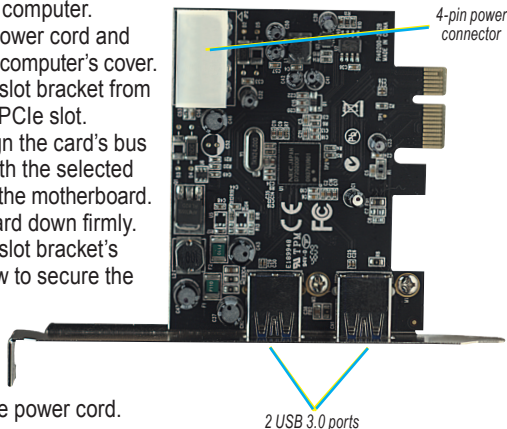
- Fits PCI Express x1, x2, x4, x8 and x16 lane buses
- 4-pin power connector for receiving extra power from system
- Plug and Play installation; hot-swappable; Windows compatible
- Lifetime Warranty

System Requirements

- Windows XP/Vista/7 32- and 64-bit
- PCI Express-enabled system with an available PCI Express slot
- CD-ROM drive

HARDWARE INSTALLATION

1. Turn off your computer.
2. Unplug the power cord and remove your computer's cover.
3. Remove the slot bracket from an available PCIe slot.
4. Carefully align the card's bus connector with the selected PCIe slot on the motherboard. Push the board down firmly.
5. Replace the slot bracket's holding screw to secure the card.
6. Replace the computer cover and reconnect the power cord.



DRIVER INSTALLATION

1. Insert the included driver CD into the computer's CD-ROM drive.
2. On the computer desktop, go to Start, then Run.
3. Enter "D:\PCIe\NEC uPD720200\Setup.exe" (where "D" or another appropriate letter corresponds to your CD-ROM drive designation), then click "OK."
4. Follow the on-screen instructions to complete the installation.

Verifying Driver Installation

1. On the desktop, go to Start, then Control Panel, then System Properties.
2. Click the "Device Manager" tab and confirm that "NEC Electronics USB 3.0 Host Controller" and "NEC Electronics USB 3.0 Root Hub" are both listed under "Universal Serial Bus controllers," indicating the driver has been installed properly.

SPECIFICATIONS

Standards and Certifications

- CE; FCC; USB 1.0, 1.1, 2.0 & 3.0; PCI Express Specification, rev. 2.0

Ports

- 2 SuperSpeed USB external ports, type A
- Data transfer rates of 5 Gbps, 480 Mbps, 12 Mbps and 1.5 Mbps
- NEC USB controller

Bus

- PCI Express x1
- Bus speed 5 Gbps (bi-directional)

Package Contents

- SuperSpeed USB PCI Express Card, x1 lane
- User manual and CD driver



MANHATTAN® offers a complete line
of PC Components, Peripherals, Cables and Accessories.

Ask your local computer dealer for more information
or visit us online at

www.manhattan-products.com

Copyright © MANHATTAN

All products mentioned are trademarks or registered trademarks of their respective owners.