

IDE to SATA 150 Converter

Converts any IDE Drive to a SATA 150 Controller

Model
170598

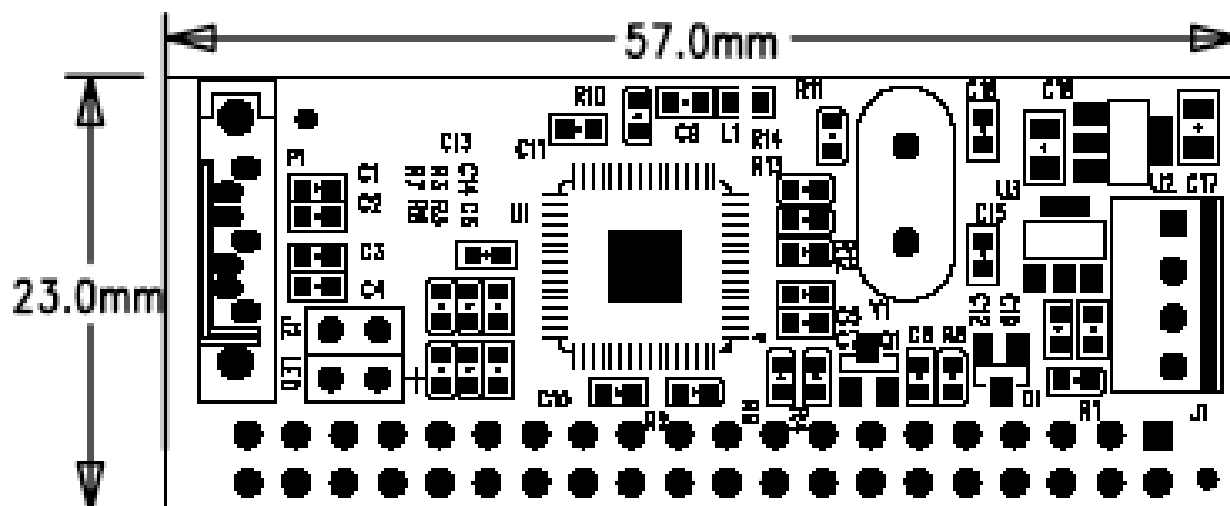
Gives legacy IDE drives new levels of SATA performance.

MANHATTAN® IDE to SATA 150 Converter easily connects an IDE drive with a SATA 150 host controller. Designed to quickly mount onto most hard disk, DVD and CD drives, technicians can save upgrade costs and extend the service life of existing IDE devices with new, practical uses. With its multiple drive connection types, MANHATTAN IDE to SATA 150 Converter helps increase system versatility and functionality with IDE and SATA interoperability. Supporting SATA 150 data transfer rates of up to 1.5 Gbps and large drives over 137 GB, the MANHATTAN IDE to SATA 150 Converter is an effective solution for installing legacy IDE devices into newer SATA computers.

Lifetime Warranty

Strict manufacturing standards ensure the highest quality in all MANHATTAN products. All items carry a full Lifetime Warranty — the strongest quality commitment anyone can make.





Features

- Supports SATA 150 data transfer rates of up to 1.5 Gbps
- Compatible with most IDE devices
- Large drive support of over 137 GB
- Attach IDE drives to standard SATA connections
- Miniature bridge takes up minimal space
- Lifetime Warranty

Specifications

STANDARDS AND CERTIFICATIONS

- FCC
- CE
- SATA 1.0a

GENERAL

- 48-bit LBA support
- Supports Spread Spectrum in receiver
- Support for drives larger than 137 GB
- Hardware bridge supports PC, Mac and Linux environments

PHYSICAL

- Dimensions: 59 x 25 x 22 mm (2.3 x 1 x 0.9 in.)
- Weight: 11.3 g (0.4 oz.)

PACKAGE CONTENTS

- IDE to SATA 150 controller
- Quick installation guide

For more information on MANHATTAN products, consult your local dealer or visit www.manhattan-products.com.



Copyright © MANHATTAN

All names of products or services mentioned herein are trademarks or registered trademarks of their respective owners. Distribution and reproduction of this document, and use and disclosure of the contents herein, are prohibited unless specifically authorized.

MH-178598-DS-0609-01