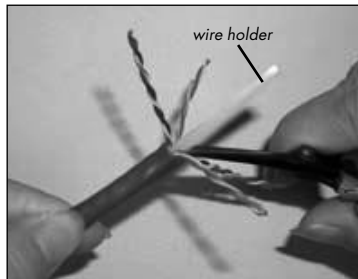
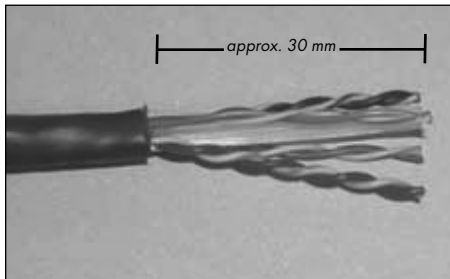


# SURFACE MOUNT BOX QUICK START GUIDE

Thank you for purchasing one of a variety of INTELLINET NETWORK SOLUTIONS™ Surface Mount Boxes.

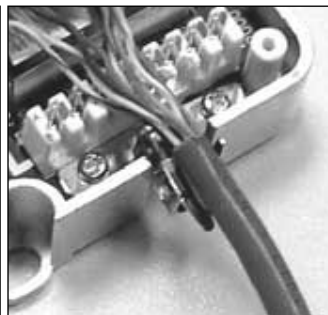
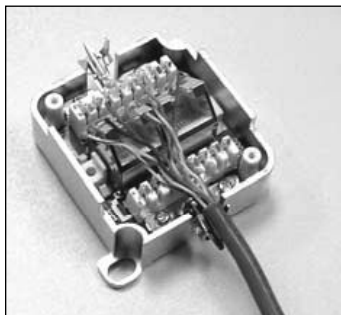
Follow the steps on this quick start guide for easy installation and use of any of the following versions of this product: shielded (FTP) or unshielded (UTP); Cat5e or Cat6; and 1- or 2-port.



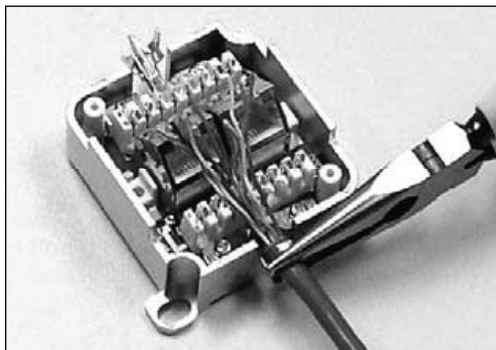
1. Carefully strip away approximately 30 mm of the cable jacket(s) (above left) to be connected to the Box, separating the wires into four pairs. Using a wire cutter, cut the wire holder (above right) flush with the cable jacket.



2. Unscrew and remove the cover plate (above left) from the Box, then unscrew and remove the inner cover (above right) to reveal the color-coded pins inside the unit.



3. Place the end of the cable jacket onto the cable clamp so that the wire pairs can easily be positioned as needed inside the Box.



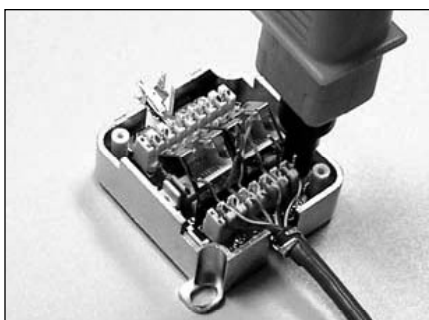
4. Using pliers, tighten the cable clamp to secure the cable to the Box.

## T568A

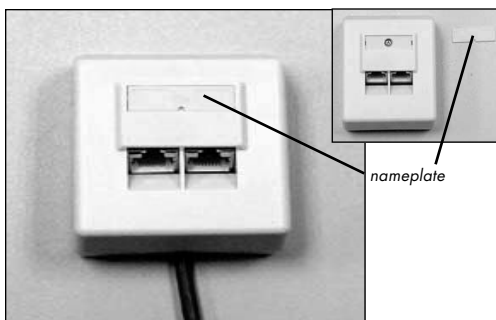
PIN 5 WHITE/BLUE  
PIN 4 BLUE  
PIN 1 WHITE/GREEN  
PIN 2 GREEN  
PIN 3 WHITE/ORANGE  
PIN 6 ORANGE  
PIN 7 WHITE/BROWN  
PIN 8 BROWN

## T568B

PIN 5 WHITE/BLUE  
PIN 4 BLUE  
PIN 1 WHITE/ORANGE  
PIN 2 ORANGE  
PIN 3 WHITE/GREEN  
PIN 6 GREEN  
PIN 7 WHITE/BROWN  
PIN 8 BROWN



5. Use a Krone punch-down tool to crimp each pair of wires and connect them to their corresponding color-coded pins.



6. Re-attach the inner cover and the cover plate. Insert the nameplate components in the cover plate slot above the port(s).

  
**INTELLINET**  
NETWORK SOLUTIONS  
BRINGING NETWORKS TO LIFE

[www.intellinet-network.com](http://www.intellinet-network.com)

Are you completely satisfied with this product?  
Please contact your  
INTELLINET NETWORK SOLUTIONS™  
dealer with comments or questions.

Copyright © INTELLINET NETWORK SOLUTIONS  
All products mentioned are trademarks or registered trademarks  
of their respective owners.