

WIRELESS 300N 4-PORT ROUTER QUICK INSTALL GUIDE

MODEL
524490



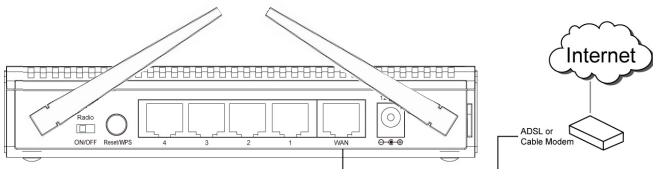

INTELLINET
NETWORK SOLUTIONS

INT-524490-QIG-1208-03

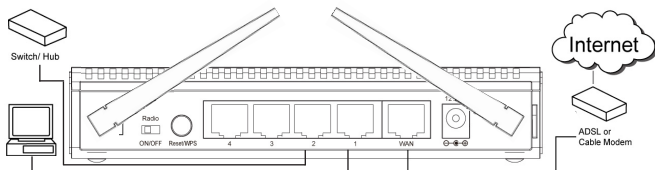
Thank you for purchasing the INTELLINET NETWORK SOLUTIONS™ Wireless 300N 4-Port Router, Model 524490. This quick install guide presents the rudimentary steps required to set up and operate this device. For specifications and more detailed instructions, refer to the user manual on the CD enclosed with this product or at www.intellinet-network.com.

Installation

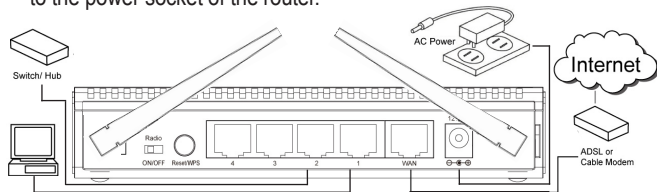
1. Connect the LAN/Ethernet port of your DSL or cable modem to the WAN port of the router using the provided RJ45 Ethernet cable.



2. Connect all your computers and network devices (network-enabled components like game consoles, network media players, network storage units or LAN switches) to the LAN ports (1-4) of the router.

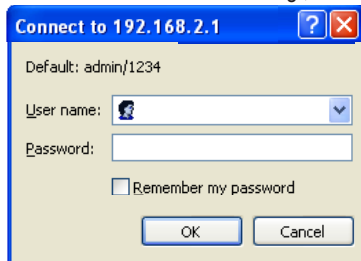


3. Connect the A/C power adapter to the wall socket, and then connect it to the power socket of the router.



4. Check all LEDs on the front panel. The PWR LED should be on, and the WAN and LAN LEDs should be on if the computer or network device connected to the corresponding router port(s) is powered on and correctly connected.
5. Connect your computer to one of the LAN ports of the router, then activate the network connection. Start the Web browser — e.g., MS Internet Explorer — and open <http://192.168.2.1> to display a login window.
6. Enter “admin” for username and “1234” for password.

Additional install instructions — as well as explanations for all the setup options — can be found in the user manual on the enclosed CD.



Safety Guidelines

- *Do not* place this router outdoors or near excessive heat or humidity.
- *Do not* yank any connected cables; disconnect them gently.
- If placing this device at heights or on a wall, make sure it's firmly secured to prevent damage or possible injury.
- Router parts (antennas, power supply, etc.) are dangerous should children put them in their nose or mouth. *Keep out of the reach of children!*
- It's normal for the router to become hot when used a long time, so keep the router away from paper, cloth and other flammable materials.
- There's no user-serviceable part inside the router. If you find that the router is not working properly, contact your dealer (place of purchase) and ask for help. *Do not* disassemble the router: Doing so will void the warranty.
- If the router falls into water while turned on, *do not* touch it to remove it! Turn off its power source before you do anything, or contact an experienced technician for help.
- If smoke or strange odors emanate from the router or power supply, remove the power supply or turn the power off immediately.



INTELLINETTM

N E T W O R K S O L U T I O N S

INTELLINET NETWORK SOLUTIONSTM offers a complete line of active and passive networking products.

Ask your local computer dealer for more information or visit

www.intellinet-network.com.

Copyright © INTELLINET NETWORK SOLUTIONS

All products mentioned are trademarks or registered trademarks of their respective owners.

